

SINGLE Cooling systems with integrated cooling circuit

 **Chill Advanced**



Cooling systems of the Chill Advanced product family are suitable for industrial applications that require liquid cooling. Equipped with their own cooling circuit and a medium-level cooling capacity range from 6 kW up to 70 kW, they are suitable for all purposes and numerous applications across all industries. Maximum quality and process reliability distinguish the open-circuit, contamination-free systems which can be adapted for special requirements and operating conditions with numerous hydraulic, electric and control options.

single
*first choice
in temperature control*

STANDARD EQUIPMENT

General

- ▶ Rugged, powder-coated sheet steel housing
- ▶ High-quality materials and components
- ▶ Suitable for indoor operation
- ▶ Air-cooled or water-cooled condensers

Hydraulics

- ▶ Nominal capacity at 10 °C water temperature and ambient temperature of 32 °C
- ▶ Refrigerant R134a or R404A, optional R507 for low fluid-temperature applications

Electrical and control equipment

- ▶ Micro-processor controller with control accuracy of up to $\pm 1\text{K}$
- ▶ Switch box to IP54
- ▶ Capacity control

OPTIONS

- ▶ SCT controller with 7" touch screen
- ▶ Equipment for extreme ambient temperatures
- ▶ Equipment for extreme fluid temperatures of -50 °C
- ▶ Split construction with external condenser
- ▶ Pressure gauging
- ▶ Frequency control of installed cold compressors for optimum capacity and energy optimization
- ▶ Flow rate metering by means of differential pressure or without moving components
- ▶ Volume-flow control
- ▶ Additional heater for extended temperature range
- ▶ High-pressure pumps
- ▶ Tank pump units with free cooling systems with or without glycol separation
- ▶ Connection for various analogue and digital electric interfaces
- ▶ Virtually unlimited hydraulic and electric options

CHILL ADVANCED PLUS

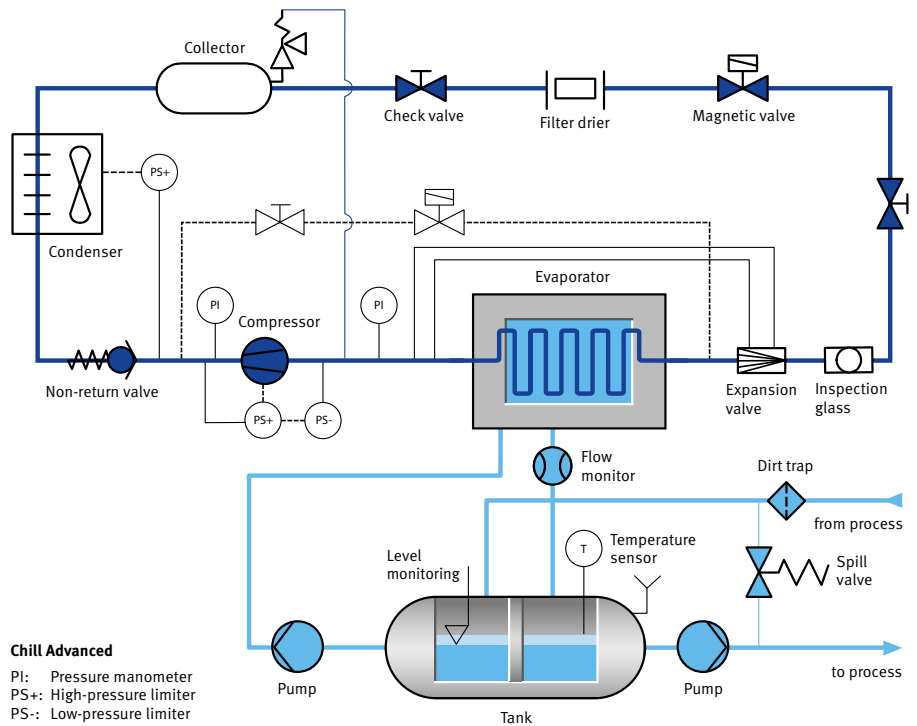
- ▶ Heater for maximum fluid temperatures of up to 180 °C
- ▶ Optional flow and pressure metering and SPS control

SINGLE Cooling systems with integrated cooling circuit

Chill Advanced



Optional SCT controller
with 7" touch screen



Chill Advanced

Structural units		Chill Advanced 6	Chill Advanced 9	Chill Advanced 14	Chill, Advanced 20	Chill Advanced 25	Chill Advanced 30	Chill Advanced 40	Chill Advanced 60	Chill Advanced 70	
Refrigerant		R 134a	R 134a	R 410A	R 410A	R 410A	R 410A	R 410A	R 410A	R 410A	
Cooling capacity (10 °C water temperature)	kW	6	9/9.3	13.9	19.7	25.5	31.3	42	60	70	
Max. flow rate	l/min	65/75*	65/75*	150	150	150	240	240	400	400	
Max. pressure (max. values of the characteristic)	bar	4.7/5.9*	4.7/5.9*	4/7.5*	4/7.5*	4/7.5*	4.4/6.7*	4.4/6.2*	4,1/7.3*	4,1/7.3*	
Connections circulating media		G 3/4" FPT	G 3/4" FPT	G 1_1/4"	G 1_1/4"	G 1_1/4"	G 1_1/2"	G 1_1/2"	G 2"	G 2"	
Air flow-rate (with air-cooled condenser)	m ³ /h	3600	4000	5800	7500	8000	13000	16500	26900	42000	
Cooling water flow-rate (with water-cooled condenser)	l/min	25	32	45	50	67	110	167	200	250	
Connections cooling water	FPT	G 3/4"	G 3/4"	G 1"	G 1"	G 1"	G 1_1/2"	G 1_1/2"	G 1_1/2"	G 1_1/2"	
Temperature range	°C	-5...+30	-5...+30	-10...+20	-10...+20	-10...+20	-10...+20	-10...+20	-10...+20	-10...+20	
Dimensions (without connections)	L	mm	820	1020	1450	1450	1450	2015	2015	2415/2040	2415/2150
	W	mm	640	640	750	750	750	850	850	1300/1210	1300
air-cooled	H	mm	1260	1460	1680	1680	1680	1920	2015	2050	2050
water-cooled	H	mm	1260	1460	1550	1550	1550	1565	1565	1765	1800
Approximate weight	kg	195	270	400	470	480	750/600	850/750	1400/850	1400/1050	

* Special pump