

SINGLE Compact cooling systems with integrated cooling circuit

Chill Compact



Compact cooling systems of the Chill Compact product family are suitable for all applications that require liquid cooling in the smaller capacity range. Equipped with their own cooling circuit, they are used for small and laboratory tasks as well as for special applications across all industries – from 1 kW up to 5 kW cooling capacity. Premium quality and process reliability characterise these open-circuit and contamination-free systems with a variety of special customizing options to meet special requirements and operation conditions.

STANDARD EQUIPMENT

General

- ▶ Rugged, powder-coated sheet steel housing
- ▶ High-quality materials and components
- ▶ Suitable for indoor operation
- ▶ Air-cooled or water-cooled condensers

Hydraulics

- ▶ Nominal capacity at +10 °C water temperature and ambient temperature of +32 °C
- ▶ Refrigerant R134a

Electrical and control equipment

- ▶ Micro-processor controller with control accuracy of up to $\pm 1\text{K}$
- ▶ Switch box to IP54

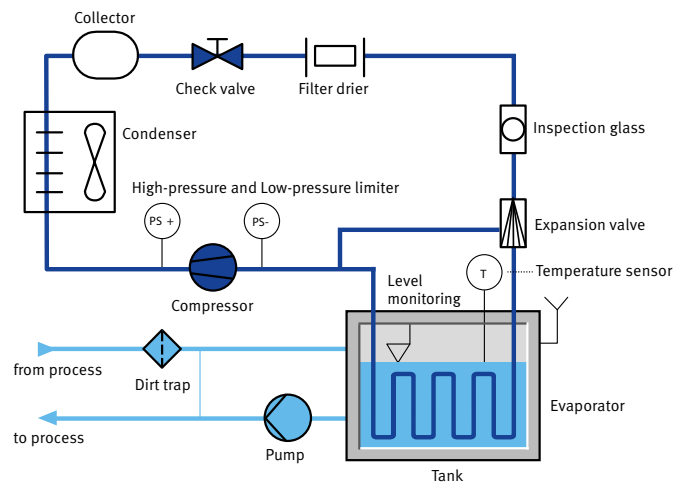
OPTIONS

- ▶ SCT controller with 7" touch screen
- ▶ Equipment for extreme ambient temperatures
- ▶ Equipment for supply temperatures of up to -10 °C
- ▶ Split construction with external condenser
- ▶ Pressure gauging
- ▶ Flow rate metering by means of differential pressure or without moving components
- ▶ Additional heater for extended temperature range
- ▶ Connection for various analogue and digital electric interfaces
- ▶ Virtually unlimited hydraulic and electric options

single
*first choice
in temperature control*

SINGLE Compact cooling systems with integrated cooling circuit

Chill Compact



Chill Compact

Structural units		Chill Compact 1	Chill Compact 2	Chill Compact 3	Chill Compact 4	Chill Compact 5
Refrigerant		R 134a	R 134a	R 134a	R 134a	R 134a
Cooling capacity (10 °C water temperature)	kW	1	2	3	4	5
Max. flow rate	l/min	27	40	60	60	60
Max. pressure (max. values of the characteristic)	bar	4.5	3.5/5*	3.8/5*	3.8/5.5*	3.8/5.5*
Connections circulating media		14 mm	14 mm	14 mm	14 mm	14 mm
Air flow-rate (with air-cooled condenser)	m ³ /h	1000	1000	2250	2250	2250
Cooling water-flow rate (with water-cooled condenser)	l/min	6	7	8	11	14
Connections cooling water	FPT	G 3/8"	G 1/2"	G 3/4"	G 3/4"	G 3/4"
Temperature range	°C	-5...+30	-5...+30	-5...+30	-5...+30	-5...+30
Dimensions (without connections)	L	mm	700	765	910	960
	W	mm	370	455	575	635
	H	mm	480	690	810	940
Approximate weight	kg	50	120	130	135	175

* Special pump